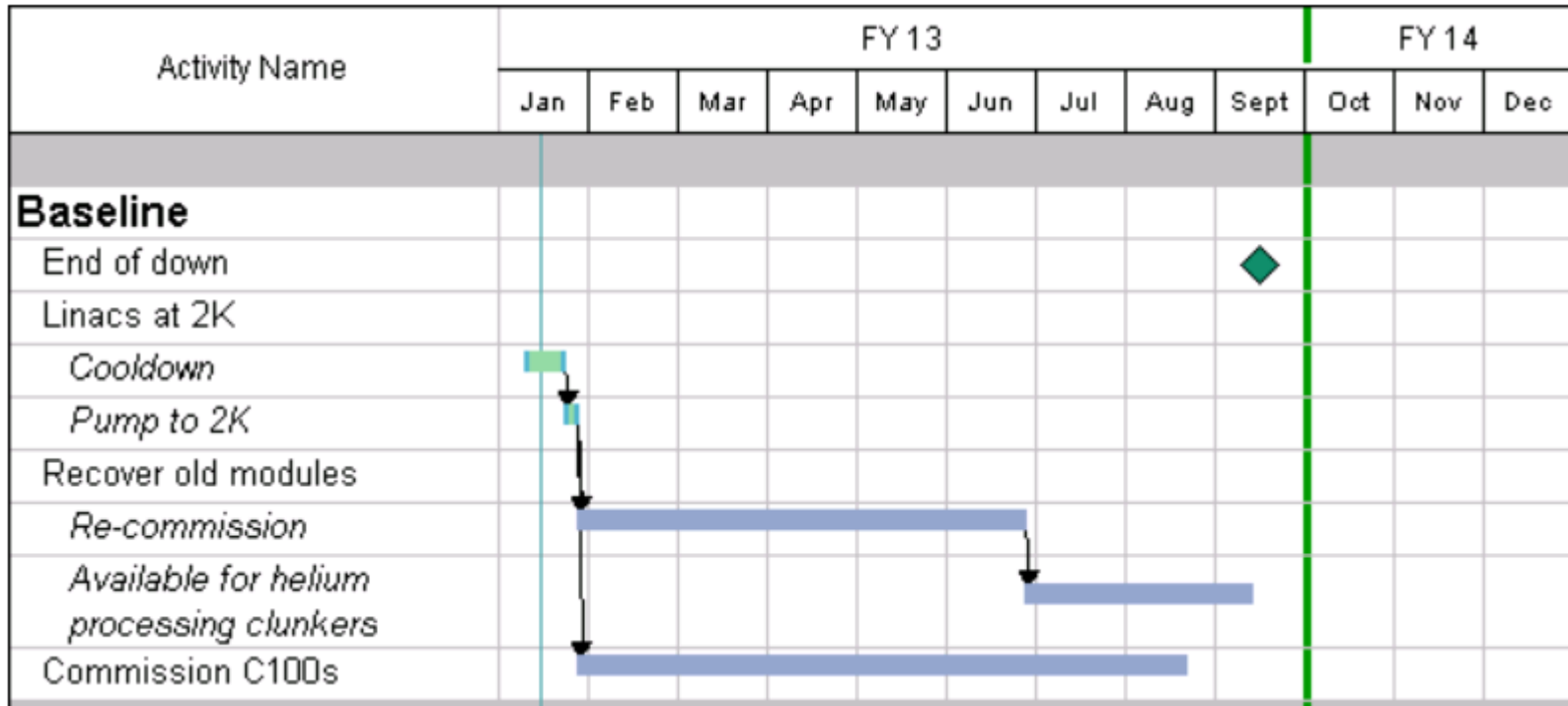


12 GeV & Cooldown Delay: Impact

- **Completion of C100 commissioning delayed day-for-day**
 - **Plan had about 1 month of float to end of the down**
 - ⇒ **Delay longer than 1 month busts the end of the down**



Mitigations: Shift to CHL2

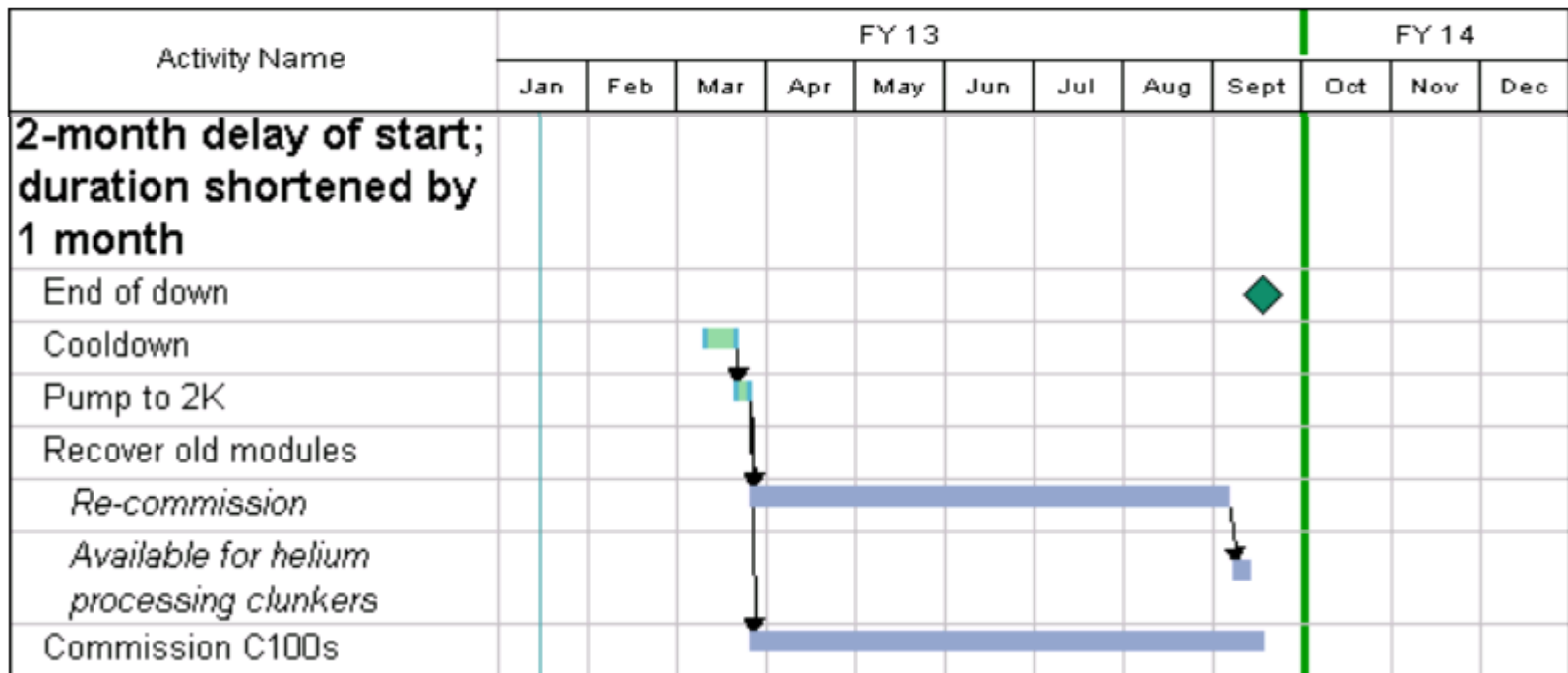
No joy

- **Nominally ready mid-May (4 months from now)**
 - **Need the transfer line that connects it to everything**
 - **Need to shake down new 4K plant and get it running robustly**
- **Transfer line not complete mid-April (3 months from now)**
 - **Extra bodies won't help due to small working area**
 - **OT maybe but 2+ months is a long haul for ongoing OT**
- **After we have the TL, it has to get plugged in and we make everything run stably 4K-2K system run stably.**

Mitigations: Shorten C100 commissioning duration

Some joy!

- Can save a month by rebalancing resources between C100 comm and C20/C50 re-comm.
- Would “fix” a 2-month delay in start of cooldown, but...
 - Just barely and we end up with no float.
(Who thinks we don't need some float?)
 - Little/no time available for helium-processing bad cavities



Mitigations: Shorten C100 commissioning duration

Possible joy

- **Add some day-shift commissioning**
 - **Need to be able to lock up**
 - **Beam Transport**
 - **Work in racetrack is complete at end of July**
 - **Leaves 6 weeks for ~unfettered lockup**
 - **May be able to shift things around and enable lockup on one side earlier.**
 - **May need to rearrange some Ops maintenance work**
 - **Need more commissioning crews or work extended shifts**
 - **RF crowd and operators and ??**

Mitigations: Other

Iffy joy

- **Reduce amount of data acquired during testing**
 - **Would have to invoke it early in order to have any impact**
- **Extend cryomodule work into Hot Checkout**
 - **Keep as contingency if we run late**
 - **Why not?**